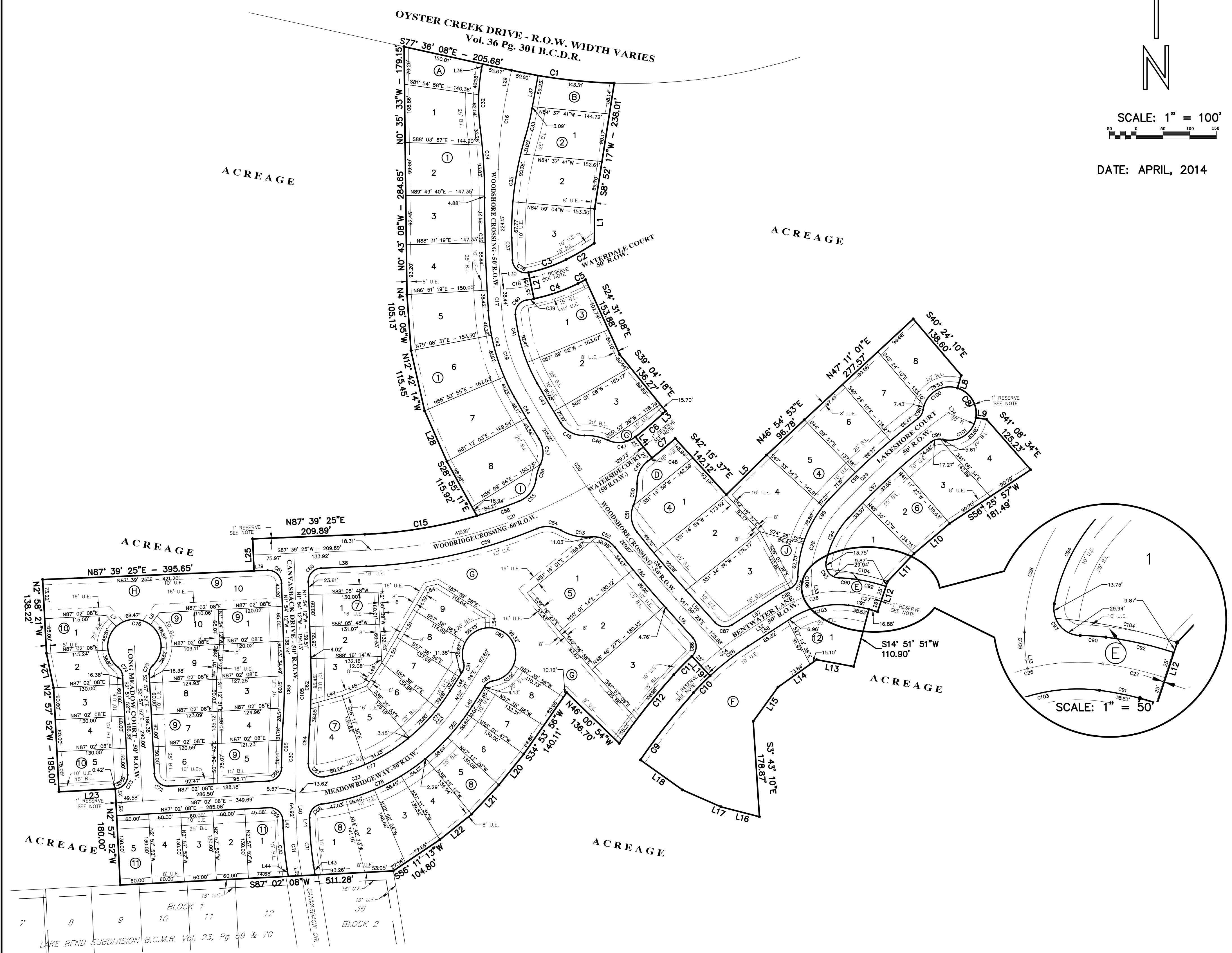


SCALE: 1" = 100'

DATE: APRIL, 2014



Curve Table with columns: Curve #, Radius, Length, Delta, Chord Bearing - Distance. Lists curves C1 through C33.

Curve Table with columns: Curve #, Radius, Length, Delta, Chord Bearing - Distance. Lists curves C34 through C63.

Curve Table with columns: Curve #, Radius, Length, Delta, Chord Bearing - Distance. Lists curves C64 through C93.

Line Table with columns: Line #, Bearing, Distance. Lists lines L1 through L19.

Line Table with columns: Line #, Bearing, Distance. Lists lines L21 through L43.

Line Table with columns: Line #, Bearing, Distance. Lists lines L44 through L58.

Curve Table with columns: Curve #, Radius, Length, Delta, Chord Bearing - Distance. Lists curves C94 through C106.

RESERVE TABLE with columns: RESERVE DESIGNATION, RESERVE RESTRICTION, S.F. Lists reserves A through J.

GENERAL NOTES:

- 1. D.E. indicates Drainage Easement.
2. U.E. indicates Utility Easement.
3. B.L. indicates Building Line.
4. R.O.W. indicates Right-of-Way.
5. B. C. M. R. indicates Brazoria County Map Record.
6. All drainage easements shall be kept clear of fences, buildings, vegetation, and other obstructions for the purpose of the operation and maintenance of the drainage facility by the appropriate entity.
7. This subdivision is not directly affected by any pipeline crossing.
8. The coordinates shown here are Texas South Central Zone No. 4204 State Plane South Coordinates (NAD83) and may be brought to grid by applying the following combined scale 0.999988100.
9. This property does currently lie within the boundaries of the city of Clute, Texas and Velasco Drainage District.
10. One-foot Reserve dedicated to the public in fee as a buffer separation between the side and end of streets where such streets abut adjacent property. The condition of such dedication being that when the adjacent property is subdivided or re-subdivided in a recorded plat, the one-foot reserve shall thereupon become vested in the public for street right-of-way purposes and the fee title thereto shall revert to and vest in the dedicator, his heirs, assigns or successors.
11. B.C.O.P.R. indicates Brazoria County Official Public Records.
12. B.C.C.F. indicated Brazoria County Clerks File

WOODSHORE SECTION ONE

A SUBDIVISION PLAT OF 27.48 ACRES OUT OF 305.31 ACRE TRACT OF LAND OUT OF JARED E. GROCE 5 LEAGUES, ABSTRACT No. 66 CITY OF CLUTE, BRAZORIA COUNTY, TEXAS

CONTAINING 12 BLOCKS - 67 LOTS - 10 RESERVES * OWNER * DHK Clute, LLC

* SURVEYOR * PREJEAN & COMPANY LAND SURVEYING/MAPPING

* ENGINEER * DEDED SERVICES, LLC CIVIL ENGINEERING

5005 Riverway, Ste. 160 Houston, Texas 77056 (713) 961-0033

9324 WESTVIEW DRIVE HOUSTON, TX 77055 713-461-8822